

ControlVu - PoE Touch Panel

The ControlVu touch panel gives operators the freedom to change layouts and control devices directly from a PoE tablet right in front of them, with a simple touch. ControlVu can be easily designed with its own built-in control panel designer, where every button on every panel can be customized to the operators' needs. Customization options on the panel are endless and can include any number of buttons, colors and functions. Each button can be programmed to launch a different layout, manipulate sources & displays, control external devices, or run any one of the available scripts. All of this power is available for users to customize without having to write a single line of code, creating a flexible user experience for their operators without any training.



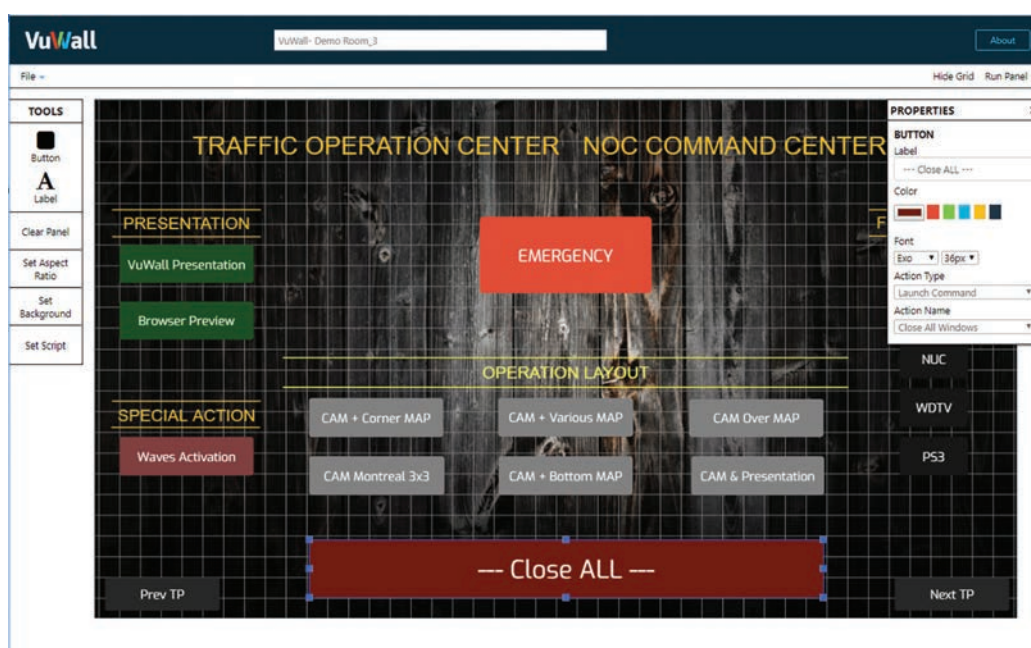
Features

- Fully integrated 10" or 15" touch panel for easy control of VuWall software
- Control video walls, displays and other external devices
- Customize individual control interfaces with built-in Control Panel Designer

Technical Specifications	10" model	15" model
Touch Panel	10" multi-touch panel with continuous glass surface	15.6" multi-touch panel with continuous glass surface
Resolution	1280 x 800	1920 x 1080
Network	RJ45 Ethernet 10/100	RJ45 Ethernet 10/100
OS / GUI	Locked Android OS Settings password protected against user access	Locked Android OS Settings password protected against user access
Dimensions	26cm x 18cm x 2.5cm 10.2" x 7.1" x 0.98"	38.8 cm x 24.5 cm x 3.95 cm 15.3" x 9.7" x 1.5"
Stand	Table stand included	Table stand included
Power & Consumption	PoE or External 100-240 VAC, 13W	PoE or External 100-240 VAC, 60W

Control Panel Designer

The integrated Control Panel Designer is a tool provided with the VuWall2 and TRx software to easily build custom control panels for the ControVu touch panel, without any programming! Each button can launch layouts, scripts or even control external devices. Multiple panels can be created from the same interface, allowing a single admin to design a custom panel for every operator station. With endless design possibilities, users can upload logos, images, and backgrounds and create buttons from a variety of shapes and colors. The built-in scripting tool allows for an easy way to assign a series of multiple tasks with a single button. These tasks may include various commands such as manipulating layouts and other triggers, as well as controlling external devices such as switching displays on and off, controlling audio settings.



Features

- Compatible with ControlVu touch panel and all other html5 compatible browsers running on mobile devices or desktops.
- Customizable buttons, backgrounds, and images.
- Customizable actions to launch layouts, scripts, and control external devices such as displays, audio, etc.

